



SCHLEGEL
 electronic materials
 a member of **EMEI Group**

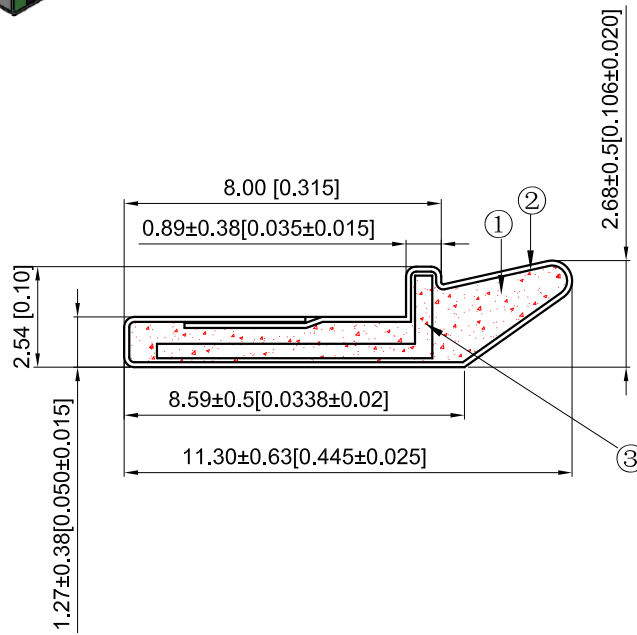
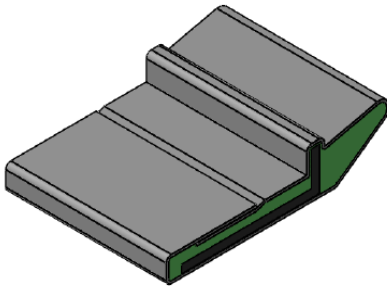
SEM FE DIVISION PRODUCT PRINT

The Information disclosed on this drawing is confidential and the property of Schlegel Electronic Materials, Inc. The use, disclosure, or reproduction of this Information and related know-how is prohibited without written permission from Schlegel Electronic Materials, Inc.

Revisions

Lev	Description	Date	By
Ⓓ	Initial Release	9.Dec.11	LWD
Ⓔ	Changed the width of PSA	20.Jul.17	Leo
Ⓕ			

NOTES:
 1) REFERENCE DIMENSIONS (REF) HAVE NO TOLERANCE AND ARE FOR INFORMATIVE PURPOSES ONLY.
 2) FOR ALL MISSING DIMENSIONS 3D CAD FILES SHOULD BE USED.
 3) UNLESS OTHERWISE SPECIFIED INTERPRET TOLERANCES ACCORDING TO ISO 2768C.



TOLERANCES
 Profile thickness: ±.015" (0.38mm)
 Profile width: ±.020" (0.51mm)

DECIMAL DIMENSIONS ± _____ UNLESS OTHERWISE SPECIFIED ALL DIMENSIONS IN MM[INCH]		③	SEE B.O.M.	INSERT PC20083
Date: 19.Jul.2017		②	SEE B.O.M.	CONDUCTIVE FABRIC
Sheet 1 of 2		①	SEE B.O.M.	URETHANE FOAM
Drawn Scale: 1 : 1	Approved:	Item	R.M. Number	Material Description
Cad File No. UC3E1083	Part No. E31__X_____	Drawn:	Title: KNIFE EDGE 11 EMI	Dwg. No. UC3E1083
				Rev. E



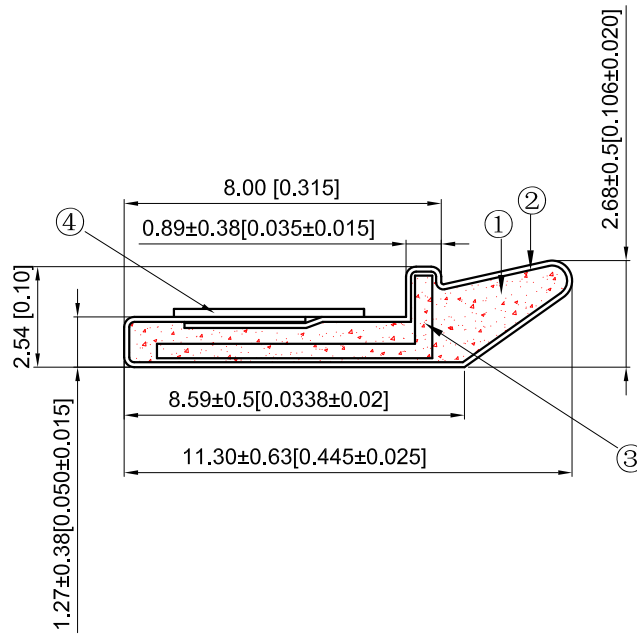
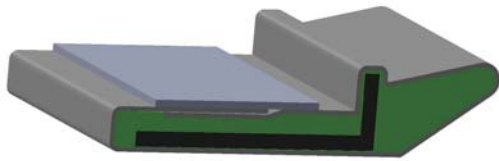
SCHLEGEL
 electronic materials
 a member of **EMEI Group**

Revisions			
Lev	Description	Date	By
Ⓓ	Initial Release	9.Dec.11	LWD
Ⓔ	Changed the width of PSA	20.Jul.17	Leo
Ⓕ			

SEM FE DIVISION PRODUCT PRINT

The Information disclosed on this drawing is confidential and the property of Schlegel Electronic Materials, Inc. The use, disclosure, or reproduction of this Information and related know-how is prohibited without written permission from Schlegel Electronic Materials, Inc.

NOTES:
 1) REFERENCE DIMENSIONS (REF) HAVE NO TOLERANCE AND ARE FOR INFORMATIVE PURPOSES ONLY.
 2) FOR ALL MISSING DIMENSIONS 3D CAD FILES SHOULD BE USED.
 3) UNLESS OTHERWISE SPECIFIED INTERPRET TOLERANCES ACCORDING TO ISO 2768C.



TOLERANCES
 Profile thickness: ±.015"(0.38mm)
 Profile width: ±.020"(0.51mm)

	④	SEE B.O.M.	PRESSURE SENSITIVE ADHESIVE .188" WIDE
	③	SEE B.O.M.	INSERT PC20083
DECIMAL DIMENSIONS ± _____ UNLESS OTHERWISE SPECIFIED ALL DIMENSIONS IN MM[INCH]	②	SEE B.O.M.	CONDUCTIVE FABRIC
Date: 19.Jul.2017	①	SEE B.O.M.	URETHANE FOAM
Sheet 2 of 2	Item	R.M. Number	Material Description
Drawn Scale: 1:1	Approved:	Drawn:	Title: KNIFE EDGE 11 EMI
Cad File No. UC3E1083	Part No. E31__T_____	Dwg. No. UC3E1083	Rev. E